

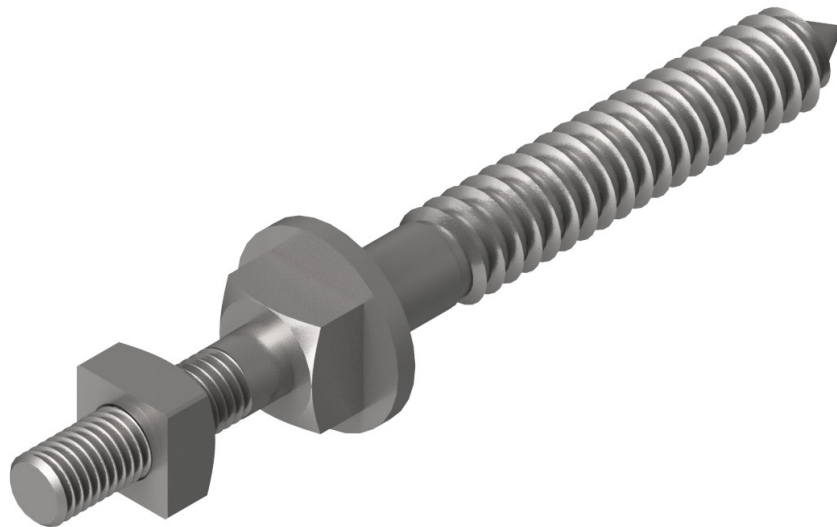
# B-CABLE SUSPENSION SCREW

## NEW PRODUCT FOR COMMUNICATIONS MESSENGER SUPPORT

USED TO ATTACH MESSENGER SUSPENSION CLAMPS WHEN USE OF A THROUGH BOLT IS NOT POSSIBLE DUE TO CLEARANCE CONSTRAINTS.

### FEATURES AND BENEFITS

- Integral forged washer head
- 7/8" x 4-1/2" gimlet thread with cone point
- Includes one 5/8" assembled square nut
- Galvanized per ASTM A-153



Catalog Number	Shaft Size	Lag Size	Integral Washer Size	Approx. Ship Wt. per Each
PSC2170146	5/8" x 2-1/2"	7/8" x 5-1/2"	1-3/4" Dia.	1.87 lbs.



hubbelpowersystems.com

For product inquiries, please contact your local sales representative or customer service representative.

©2019 Hubbell Incorporated.  
Because Hubbell has a policy of continuous product improvement, we reserve the right to change design and specifications without notice.  
Printed in the U.S.A. | SF\_06\_139E